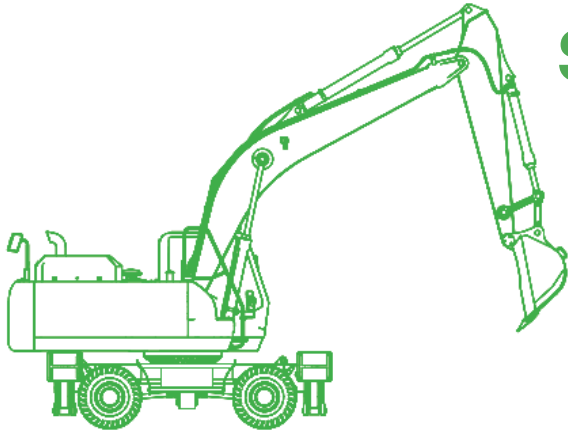


# Wheeled Excavator Simulator Training Pack



## Simulated Equipment Specs

### Included attachments (2):

narrow heavy-duty bucket and  
tillrotator bucket

### Quick coupler

**Operating capacity:** 21 t (23 US t)

**Engine:** 119 kW (160 hp)

**Swing speed:** 13.3 RPM

## Overview

The Intellia Wheeled Excavator Simulator Training Pack is the only simulation training tool of its kind that authentically replicates machine behaviors and soil properties. As a result of this high degree of realism, it provides the training opportunities needed to effectively reduce the risk of accidents, improve situational awareness, and increase productivity, all essential aspects of safe operation in urban worksites.

## Key Features & Benefits

### Progressive learning program

that covers essential skills such as trenching, loading, handling, and unloading materials in a realistic worksite.

### Detailed performance metrics and reporting

that provide instructors with objective real-time feedback on operator aptitudes, habits, and overall scores.

### Multiple attachments included,

including tillrotator, offer a well-rounded and thorough training experience.



## Part of a Complete Training Solution

Backed by decades of award-winning research and composed of proprietary and patented algorithms, the Wheeled Excavator Simulator Training Pack offers an unparalleled level of realism. The training pack's authentic machine behavior and award-winning soil simulation allow operators to develop a better understanding of the machine's tipping behavior and wheel bounciness on various terrains.



Trainers can also take lessons to the next level with Intellia's suite of instructor support tools, which offer next-generation reporting, trainee monitoring, and custom learning path planning features.

## Dedicated to Your Training Success

CM Labs' simulators are built to last and designed for years of 24/7 operator training. The training packs are compatible with various hardware configurations, designed to fit your budget, space, and specific training needs. Choose from:

- Portable **Edge Plus** desktop series
- Compact motion-enabled **Edge Max** series
- Fully immersive **Advantage** series

## Learning Outcomes

- ✓ Controls familiarization
- ✓ Live quick coupler attachment changing
- ✓ Driving skills in an urban environment
- ✓ Loading and unloading a trailer
- ✓ Arc swipe
- ✓ Truck loading
- ✓ Test weight
- ✓ Freeform sandbox in urban environment to practice skills, creative problem-solving, and good judgment

## Performance Metrics

The training pack tracks over 20 different metrics, including:

- ✓ Completion time
- ✓ Cycle Time
- ✓ Cones touched or knocked over
- ✓ Volume of material excavated per bucket load and in total
- ✓ Safety violations & collisions: vehicle flip, unsafe parking, and contacts with power lines, humans, fire hydrants, and vehicles

## Compatible Industry-Grade Controls

- ✓ Uni-directional foot pedals
- ✓ Steering wheel
- ✓ Control boxes