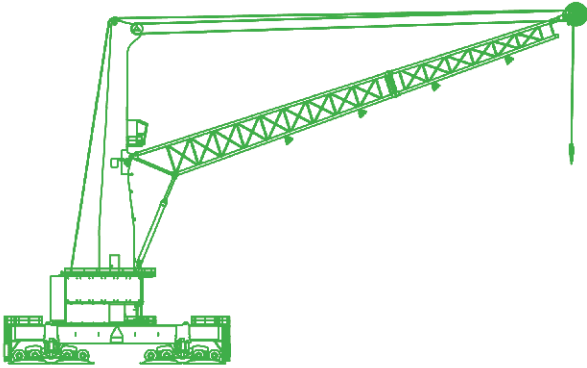


Mobile Harbor Crane Simulator Training Pack



Simulated Equipment Specs

Max working radius: 51 m (167 ft.)

Hoisting height above quay: 47 m (154 ft.)

Max lifting speed: 120 m/min (394 ft./min)

Max capacity: 125 t (138 US t)

Overview

The Intellia Mobile Harbor Crane Simulator Training Pack allows trainees to rapidly acquire operational skills through a wide range of challenging lifting scenarios, including twin-lift container handling, bulk, and breakbulk transfers. The training pack is designed to model the entire machine with high fidelity, from boom, hoist, and slew dynamics to control response and environmental conditions such as fog, wind, and night operations.

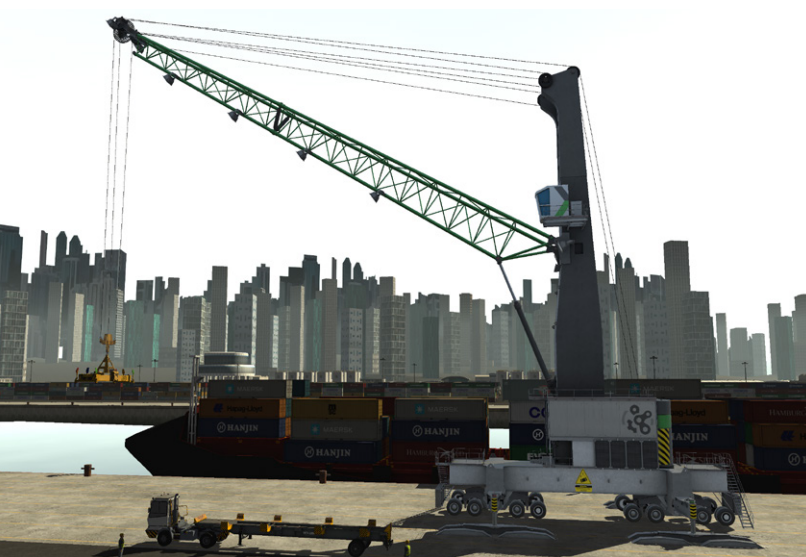
It also simulates equipment faults like twistlock failures and rigging issues for greater preparedness. Because the training pack delivers unmatched realism and mirrors authentic machine behavior across varied conditions, trainees gain the confidence and competence to transition more quickly and safely to real equipment.

Key Features & Benefits

A progressive learning program covering weeks of operator training, including control familiarization, travel, and loading and unloading.

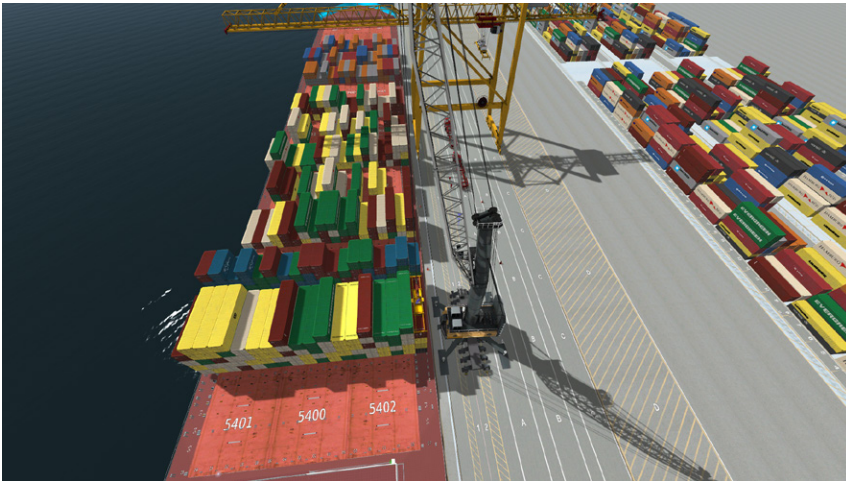
Exercise Builder allows instructors to make unlimited exercises that recreate the specific scenarios that suit their training needs.

Best-in-class crane and lifting simulation Industry-leading crane and cable simulation that authentically captures pendulum and wind effects.



A Complete Training Solution

Like all CM Labs training solutions, the Mobile Harbor Crane Simulator Training Pack delivers the most transferable operator skills anywhere, outside the real equipment. This is because it is powered by CM Labs' renowned core technology, which offers the most realistic simulated machine behavior and environments on the market.



Trainers can also elevate their lessons with Intellia's suite of instructor support tools, which include next-generation reporting, real-time trainee monitoring, and customizable learning path planning features. Additional capabilities include the ability to introduce machine malfunctions during training and assess progress using performance indicators that track aptitude in three key areas: safety, productivity, and quality.

Dedicated to Your Training Success

CM Labs' simulators are built to last and designed for years of 24/7 operator training. The training packs are compatible with various hardware configurations, designed to fit your budget, space, and specific training needs. Choose from:

- Portable **Trainer** desktop series
- Fully immersive **Advantage** series
- Premium **Master** and **MasterCab** series

Learning Outcomes

- ✓ Equipment & controls familiarization
- ✓ Learning to accurately control the spreader and attachments
- ✓ Handling complex loads such as pipes, coils, bags, rebar, and steel plates
- ✓ Efficient loading and unloading of containers (20ft, twin 20-ft, 40-ft, and 45-ft)
- ✓ Moving the crane along the quay
- ✓ Working with a clamshell to move bulk and breakbulk materials

Performance Metrics

The training pack tracks over 20 different metrics, including:

- ✓ Cycle time
- ✓ Number of collisions
- ✓ Slack hoist cable occurrences
- ✓ Unsafe operations
- ✓ Aggressive landings

Compatible Industry-Grade Controls

- ✓ Professional-grade joysticks