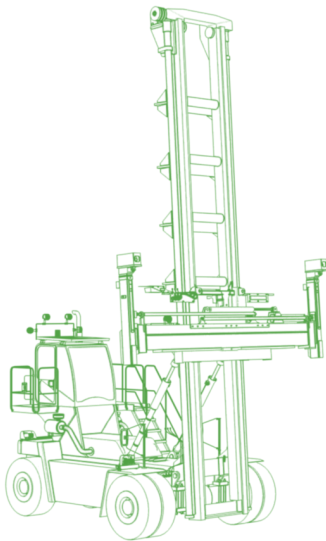


Empty Container Handler Simulator Training Pack



Overview /

Designed to run on any Vortex port equipment simulator, CM Labs' Empty Container Handler (ECH) Simulator Training Pack allows trainees to rapidly acquire operational skills in a pressure-free, safe learning environment.

Simulated equipment specs /

Stacking height: Up to 8 containers

Load Capacity: 9,000 Kg/ 10 Tons

Wheelbase: 4.5 m/ 14.5 ft

Max speed: 27 km/h/ 17 mph

Key features & benefits /

CM Labs' ECH Simulator Training Pack features all the components of an actual empty container handler, a vehicle designed to move and arrange empty cargo containers in port environments. With a 9,000 kg load capacity, the software makes training available 24/7 and accurately reproduces equipment behavior under various weather conditions, loads, and equipment failures.

A progressive learning program

covering driving exercises and yard operations with ITVs and external trucks.

Performance metrics and reporting

that provide trainers with real-time feedback on operator aptitudes and habits, along with overall scoring.

Best-of-class lifting simulation

that ensures trainees understand how the equipment works and what is required for efficient operations.



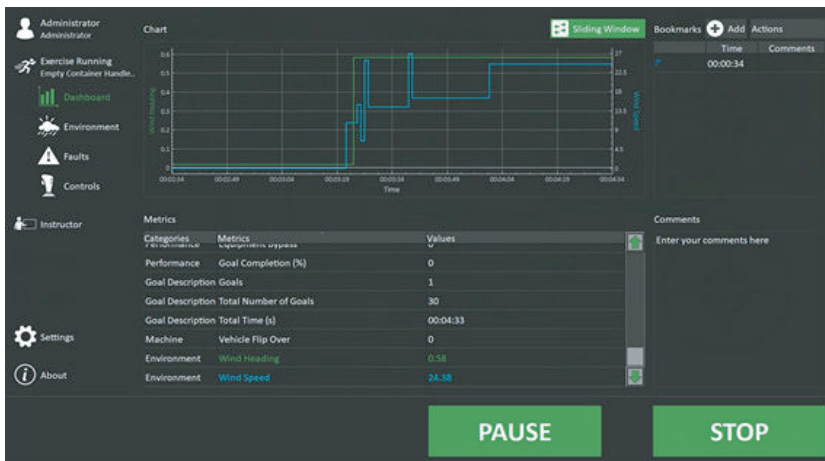
Smart Training Technology /

The ECH Simulator Training Pack incorporates CM Labs' Smart Training Technology™— resulting in a training solution that delivers the most transferable operator skills anywhere, outside the real equipment. It is the only solution on the market that can tip when the simulated equipment brakes or corners too fast, and that reacts realistically when loads are distributed unevenly.

Smart Training Technology is comprised of CM Labs' proprietary and patented algorithms, and includes real-time simulation features that are unique on the market. This means training is based on real data and real machines, and new operators reach full productivity levels up to 33% faster, according to our clients.

With a focus that goes far beyond basic controls familiarization, the ECH Simulator Training Pack exposes operators to conditions that are challenging or unsafe to replicate outside the classroom.

The training pack allows trainers to introduce specific challenges at any time, including terminal congestion, overload conditions, twistlock malfunctions and container snags, and other issues that challenge a trainee's ability to react appropriately.



Supported Simulator Hardware Platforms

The ECH Simulator Training Pack can be installed on any Vortex port equipment simulator hardware, with different configurations to meet your budget, space, and training requirements. Designed for years of 24/7 operator training, Vortex simulators are built to last.

Trainer: Portable desktop training
Advantage: Compact training station
Master: Complete trainee immersion
Mastercab: Fully Immersive cabin experience

Progressive learning program

Designed in collaboration with port operator trainers, all exercises are designed to familiarize operators with basic control functions and techniques for loading and unloading various containers in a real port setting.

Learning outcomes include:

- ✓ Becoming familiar with bays, rows, & cell identification
- ✓ Manipulating 20-, 40-, and 45-foot containers
- ✓ Driving and lifting in confined spaces
- ✓ Loading & unloading containers stacked 8 high
- ✓ Unloading containers on uneven stacks
- ✓ Driving safely over uneven ground
- ✓ And more

Performance measurement

The ECH Simulator Training Pack tracks all operating performance metrics during training exercises, and rolls them up into a single score that updates in real time. Port terminals and training schools can customise this scoring system to highlight their most important standards, so that new operators can ramp up even faster. Tracked metrics include:

- ✓ Number of containers moved
- ✓ Number of collisions
- ✓ Operator errors
- ✓ And more

Instructors can also generate reports based on customizable scoring parameters, and review against benchmarks or past training sessions.



645 Wellington Street,
Suite 301 - Montreal, Quebec
Canada, H3C 1T3

Vortex® is a registered trademark of CM Labs, Inc. Construction - 0819

info@cm-labs.com
cm-labs.com
(514) 287-1166

