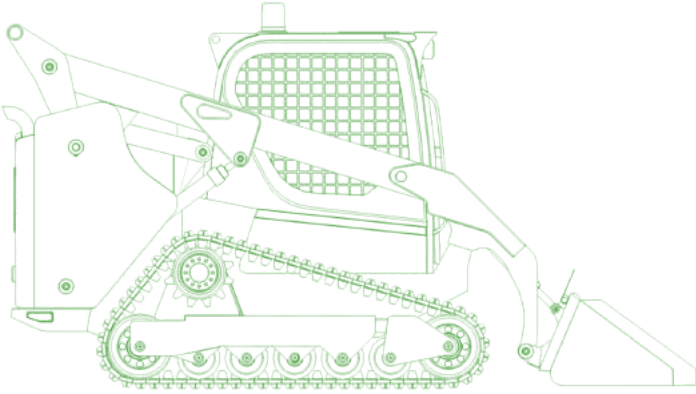


# Compact Track Loader



## Overview /

Based on the most stringent labor competency recommendations, the Compact Track Loader Simulator Training Pack is the only solution that accurately replicates machine stability, providing training opportunities to reduce the likelihood of accidents due to tipping.

## Simulated equipment specs

- Product name:** Compact Track Loader
- Attachments:** Fork & bucket
- Specs:** Vertical lift, track loader
- Operating capacity:** 2,000 – 3,000 lbs \ 907 – 1,360 kg
- Engine power:** 65-80 hp

## Key features & benefits /

The CTL is an entry-level simulator pack, rounding out the range of CM Labs’ earth-moving machines available for training and ideal for training schools or companies with a wide range of equipment in their fleet.

**Progressive learning program** that helps build skills and confidence including familiarization with load handling, excavating, and more.

**Best-in-class vehicle simulation** that ensures trainees understand how the equipment works and what is required for efficient safe operations.

**Performance metrics and reporting** that provide trainers with real-time feedback on operator aptitudes, habits, and overall scoring.



## Best-in-class simulation provides real learning benefits

Through CM Labs' Smart Training Technology™, our solution is the only simulator on the market that accurately replicates machine stability – providing real-world training opportunities to help reduce the risk of accidents.

The simulated machine behaviour helps operators gain a better feel for the impact of gear shifting and throttle use; improving lifting capacity and cycle times, ultimately reducing production costs.

Comprised of proprietary and patented algorithms, the Smart Training Technology ensures precision engineering of the simulated equipment; delivering the most transferable operator skills anywhere, outside of the real equipment.



## Supported hardware platforms

The training pack runs on CM Labs' motion-enabled Vortex Edge Max, the fully immersive Vortex Advantage, and the desktop Vortex Edge Plus.

## Learning program

The Compact Track Loader Simulator Training Pack features progressive learning exercises designed to gradually build skill and confidence:

- ✓ Controls familiarization
- ✓ Trailer loading and unloading
- ✓ Load handling
- ✓ Stockpiling
- ✓ Live attachment change
- ✓ Excavating and grading
- ✓ Truck loading
- ✓ Skills challenge
- ✓ Sandbox

Instructors can also use the optional Instructor Operating Station to trigger unexpected weather events, night or day scenarios, and insert faults into exercises.

## Performance measurement

The Compact Track Loader Simulator Training Pack gives trainers objective insight into trainee performance and abilities. Instructors can access key performance metrics in real time, such as:

- ✓ Safety violations (such as tipping, or collisions)
- ✓ Cycle time efficiency

Instructors can also generate reports based on customizable scoring parameters, and review against benchmarks or past training sessions.



645 Wellington Street,  
Suite 301 - Montreal, Quebec,  
Canada H3C 1T2

info@cm-labs.com  
[cm-labs.com](http://cm-labs.com)  
T +1 514 287 1166

 @vxsim  
 [youtube.com/vortexsim](https://youtube.com/vortexsim)

Vortex® is a registered trademark of CM Labs, Inc. Construction